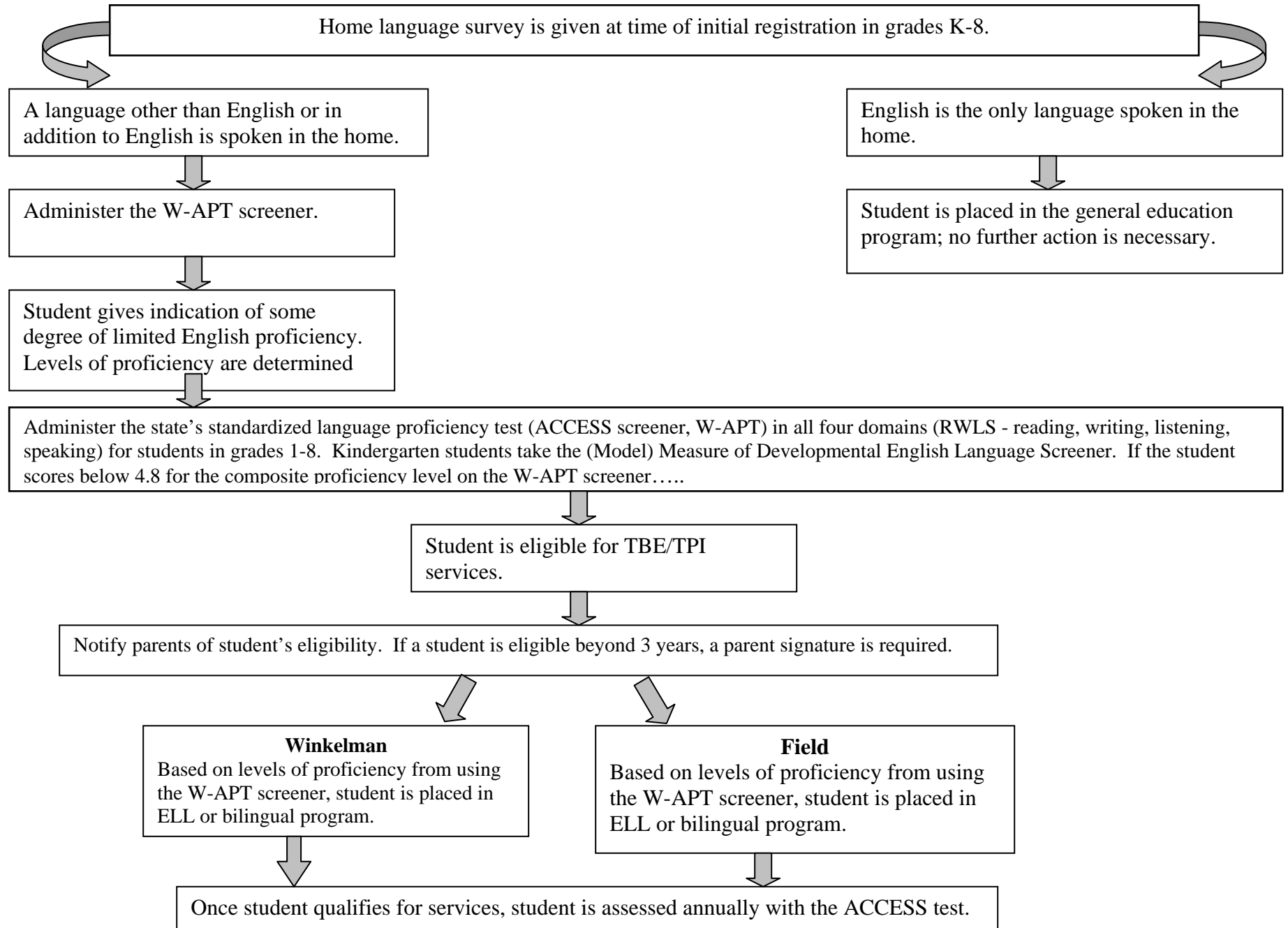


District 31 Entrance/Exit Criteria For TBE/TPI Services



Exit Criteria

Annually, administer the state's standardized language proficiency test (ACCESS) in all four domains - Reading Writing, Listening, and Speaking (RWLS) for students in grades K-8.

Student remains eligible for placement in the TBE/TPI programs if a student scores below 4.2 in literacy and 4.8 composite score. The scores are 1 (entering), 2 (beginning), 3 (developing), 4 (expanding), 5 (bridging), and 6 (reaching). The student also remains eligible if the student does not achieve 50 percentile level in Reading and Language Arts on the MAP Test (Measure of Academic Progress).

When a student's scores are 4.2 in literacy and 4.8 composite score and above on ACCESS and student achieved 50th percentile in Reading and Language Arts on the MAP tests, student is placed in the general education program. Student's progress is monitored for 2 years to determine if additional support is necessary.

If a student is eligible beyond 3 years, a parent signature is required.

Assessment Instruments for Language and Academic Proficiencies

Reading and Listening

Vocabulary
Vocabulary in Context
Reading for Understanding
Reading for Life Skills
Language Usage

ACCESS Tests

Speaking

Social and Instructional
Language Arts/Social Studies
Mathematics/Science

Writing

Linguistic Control
Vocabulary Usage
Language Control

Measure of Academic Progress Testing

Reading

Word Analysis

Vocabulary

Reading Strategies

Comprehension

Literature

Literary Works

Language Usage

Grammar

Spelling

Punctuation

Capitalization

Structure

Composition of Writing

Writing for Variety of Purposes

Mathematics

Number Sense

Measurement

Algebra

Geometry

Data, Analysis, and Probability

November 24, 2009